

COLLABORATIVE DESIGNER FOR SOLIDWORKS - TOP ENHANCEMENTS IN 2023

As an existing SOLIDWORKS user, you may face challenges in collaboratively working on designs within your team and across departments like simulation and manufacturing. Connecting your

SOLIDWORKS role allows you to access all collaboration, product data management (PDM) and product lifecycle management (PLM) capabilities from anywhere, anytime and with any connected device. You could have teams, offices and plants across the globe but, location is not a constrain with the 3DEXPERIENCE platform on cloud. Access your SOLIDWORKS designs within a browser for design reviews, approvals, drawing release and much more with curated roles for everyone participating in the product design and development process



SOLIDWORKS
Desktop



3DEXPERIENCE
Cloud Business Platform

Few of the top enhancements in collaborative designer for SOLIDWORKS are:

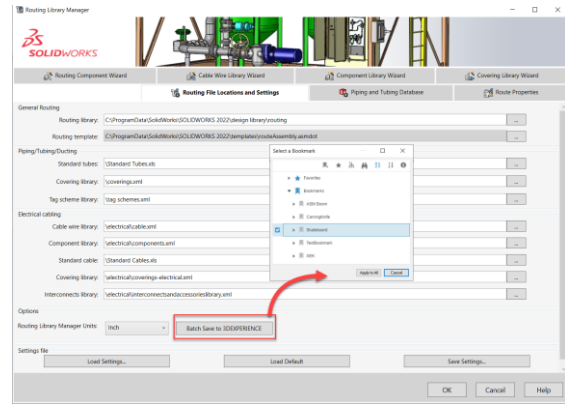
AUTOMATICALLY OPTIMIZE RESOLVED MODE

While using SOLIDWORKS assemblies, a new feature in R2023X GA, you can enable "AUTOMATICALLY OPTIMIZE RESOLVED MODE" from Options > Performance, to optimize resolved mode assemblies automatically by selectively using lightweight technology when you load components in resolved mode.

Routing Library Manager

With new "Batch save to 3DEXPERIENCE" option in routing library manager, Organize Routing Library Manager content on the 3DEXPERIENCE platform using Bookmarks.

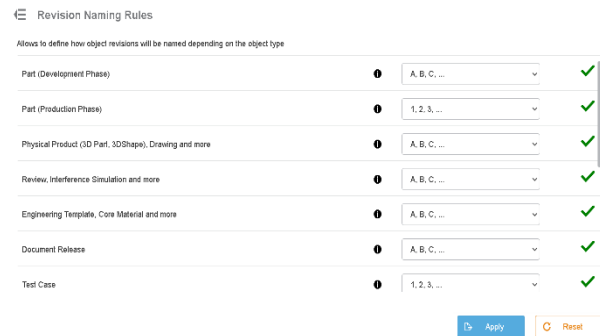
With this, share your common CAD families and files via a cloud method among your design team for better "Design Reuse"



Flexible Revisioning Scheme

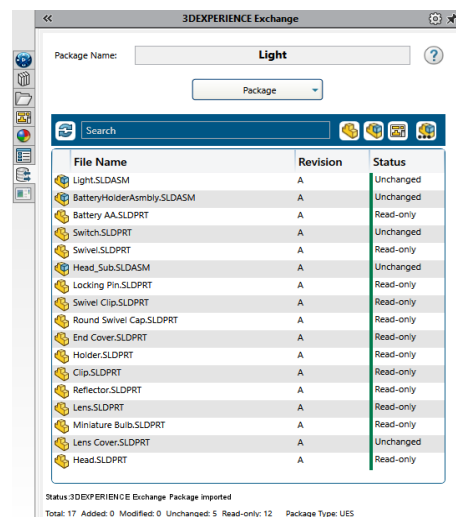
With revision management capabilities for your designs in 3DEXPERIENCE platform, it much easier to know which is the latest design you and your team are working on and for cross departmental collaboration like manufacturing.

Now choose from new flexible revision formats and utilize primary and secondary levels of revision, enabling component A.1 on revising to become A.2 instead of B, but you have that option either.



Data Exchange with External Suppliers

Often, we need to collaborate on SOLIDWORKS designs with external suppliers or clients. Now, share your models externally with edit access only to a selected part or a sub-assembly as a SOLIDWORKS Package, where other components of your product remain in read only mode. The modified package can be received and replaced with existing design on the 3DEXPERIENCE cloud without affecting the references.





Evolution thro' Knowledge

Derived Output Management

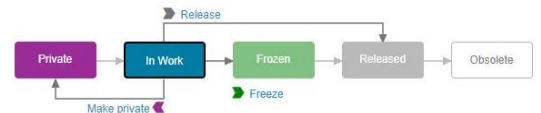
Stop converting your CAD files to other formats like step or IGES or CAD drawings to PDF Manually. With SOLIDWORKS connected 3DEXPERIENCE, you can set up these conversions as automatic while you just save your designs after working using derived format converter.

Converter	CAD Origin	Type	Target Format	Parameters	Unified Format	Event	
1	3DEXPERIENCE	SOLIDWORKS	Part	ExactGeometry	linkable	On Save from C...	
2	3DEXPERIENCE	SOLIDWORKS	Part	PDF	PDF	On Demand	
3	3DEXPERIENCE	3DEXPERIENCE	Drawing	PDF	PDF	On Demand	
4	3DEXPERIENCE	SOLIDWORKS	Part	STEP_AP214	STEP_AP214	On Demand	
5	3DEXPERIENCE	DRAFTSIGHT	Drawing	UDL	authoringvisu	On Promote -> ...	
6	3DEXPERIENCE	SOLIDWORKS	Part	ExactGeometry	linkable	On Demand	
7	3DEXPERIENCE	3DEXPERIENCE	Part	ExactGeometry	callav5	On Demand	
8	3DEXPERIENCE	3DEXPERIENCE	Part	PDF	PDF	On Demand	
9	3DEXPERIENCE	SOLIDWORKS	Drawing	UDL	authoringvisu	On Save from C...	
10	3DEXPERIENCE	3DEXPERIENCE	Part	STEP	Application Prot	STEP_AP242	On Demand
11	3DEXPERIENCE	SOLIDWORKS	Part	STEP_AP203	STEP_AP203	On Demand	

Drawing Maturity Transition Rule

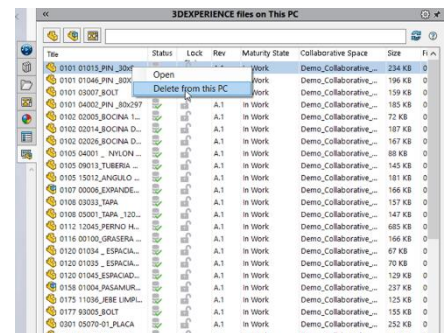
We often release drawings of designs to the manufacturing team, which are ready for manufacturing and most of errors occur in this stage of product lifecycle.

With 3DEXPERIENCE as your PLM solution, you can limit release of these engineering drawings only if its referenced component and assembly designs are in released state. This way we get prevent drawings accidentally being released by our team whose designs has not yet been finalized.



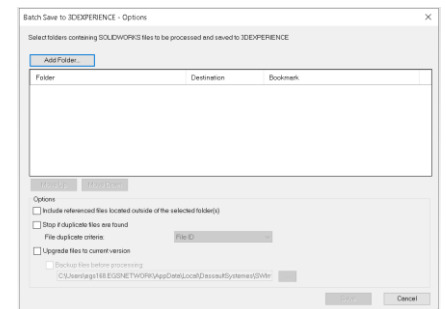
Local Cache Explorer

While working on SOLIDWORKS connected to 3DEXPERIENCE, and you open a file from cloud to work on, a local cache is created for optimal working experience. Now, explore all checked out files from the "3DEXPERIENCE Files on this PC" task pane.



Batch Save – Bookmark Editor

Apart from saving your designs to 3DEXPERIENCE while working on it, you can save existing designs from the local file location, maintaining its folder structure to the bookmark editor on 3DEXPERIENCE with "Batch Save to 3DEXPERIENCE" option.



File Assistant Tool

Continuously improve your upload workflows by adding additional checks, like missing references, missing configurations, short and duplicate file names, 3D Interconnect component links and more with new standalone "File Assistant Tool" to prevent issues during bulk upload.

