



Evolution thro' Knowledge

# E G S Computers India Pvt Ltd.

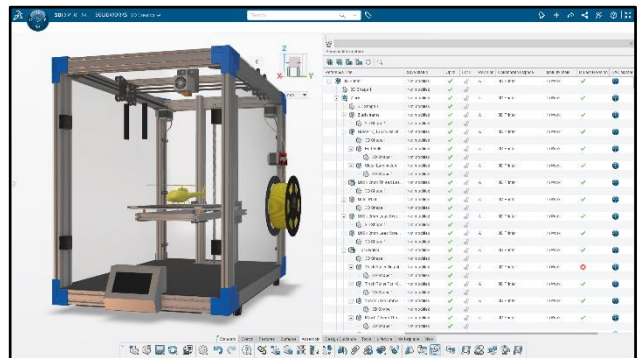
## Engineering Global Solutions

### TOP ENHANCEMENTS IN 3DEXPERIENCE CLOUD BROWSER-BASED APPS IN 2024

Using the 3DEXPERIENCE Platform you and your design teams can quickly and easily create, review and evaluate 3D conceptual and detailed models. Since the 3DEXPERIENCE Platform is cloud based you can do all of this on any device, whether you are in the office or working remotely. All you need is an Internet connection and a browser on any device, so you can login to work on your design project wherever you are! There are many xApps which serve individual purpose like 3D Creator for parametric modelling, 3D Sculptor for sub-D Modelling and more like 3D Sheetmetal Creator, 3D Structure Creator, 3D Mold creator, etc.,

Some of the exciting new and enhanced features are as follows;

**The Session Information panel** - Provides essential information such as save status, lock status, revision, maturity status, empowering you to make informed decisions and efficiently manage your assembly design process. Easily check to



make sure you're working with the most up-to-date components and the latest revisions.

**Screw Joint** - With the new Screw Joint command, you can easily create the necessary mates to simulate a screw joint between two components in an assembly. Define screw joints for lead screws, adjustment knobs, and threaded fasteners to ensure precise representation of their functionality in your assemblies.

**3D Print with Lattice Geometry** - Export lattice geometry to STL & 3MF format to prepare your optimized parts for 3D printing and achieve meticulous precision in your designs by exporting to STL & 3MF format with improved resolution control while exporting

AUTHORIZED  
Reseller



Regd. Office : DESIGN TOWERS,32/16, 5<sup>th</sup> street, Dr. Subbarayan Nagar, Kodambakkam, Chennai 600024 PH: 94454 24704

Branch Office I : 2nd Floor "SanHasa Square", No.17, Bharathi Park 3rd Cross, Saibaba Colony, Coimbatore 641 043 PH: 94449 53542

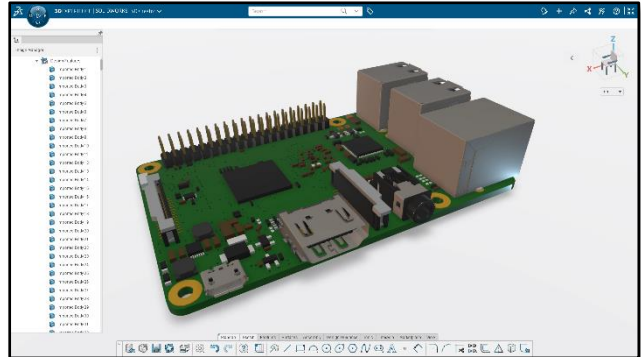
Branch Office II : No.10/1 , Abdul Salam Street, Khaja Nagar, Trichy 620 020 PH: 94449 53542

Web-Site: [www.egsindia.com](http://www.egsindia.com)

E-mail: [info@egs.co.in](mailto:info@egs.co.in)

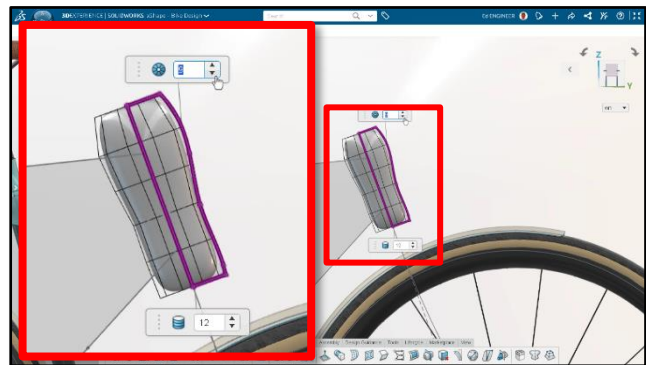
### IMPORT STEP File as Multibody

This command is particularly useful for designing electronics enclosures. Create a single part instead of hundreds of parts when importing a 3D circuit board. Maintain an organized product structure with the ability to import a STEP file as a single multibody part.



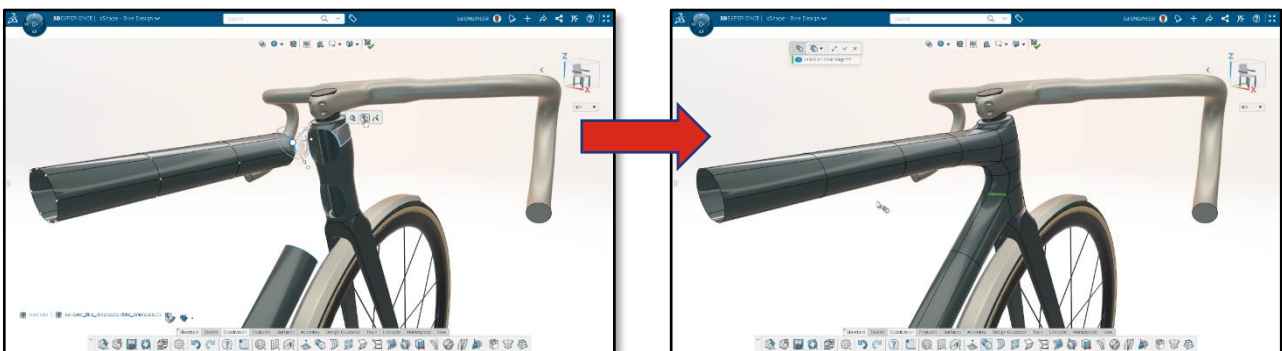
### Revolve & Extrude Primitives

With powerful, fun to use sub-D modelling capabilities in xShape, you can start sculpting with predefined shapes like cube, cone, cylinder and more. Now, you can create extrude or revolve from a sketch to create a custom subdivision primitive that more closely resembles the final product.

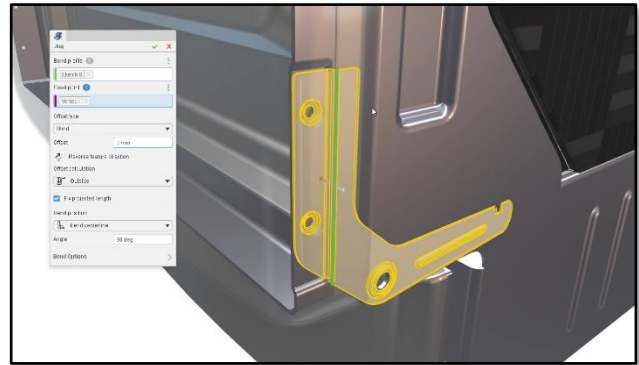


### Merge two Subdivision Surfaces

Create more complex and cohesive designs with the ability to merge two different subdivision surfaces in to one and work further for smoother transitions in your designs.

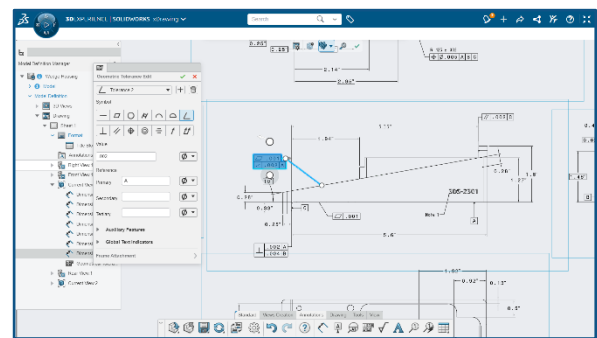


**Jog feature** combines two bends from a flat shape into a single feature. Create a sheet metal Jog feature using a single command, without the need to manually create multiple bends from flat features, simplifying the process.

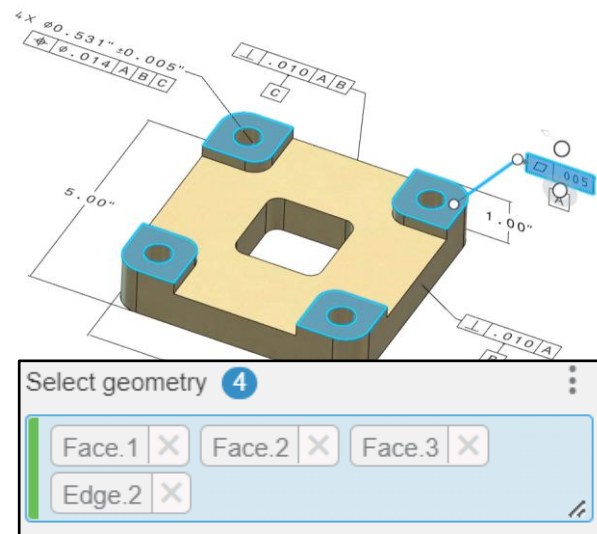


### Manufacturing Definition Creator

Add views, dimensions, and tolerances directly within the 2D drawing environment. "Define it your way", using 2D or 3D definition workflows with new 2D authoring and dimensioning capabilities. When working in 2D, all 3D annotations, and views are automatically generated maintaining the single source of truth between both forms of definition.



Ensure accurate cross-highlighting for annotations that apply to multiple faces for a single dimension, tolerance, or annotation and comply with ASME continuous feature requirements.



### Performance

Maximize your productivity and efficiency as you work with greater speed and responsiveness. Several performance enhancements had been imparted in areas of Assembly, like faster mate creation, faster free drag of component and movement in the Kinematics Player and also in other environments like sketching and feature creation.